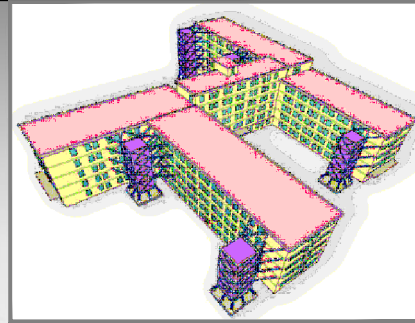
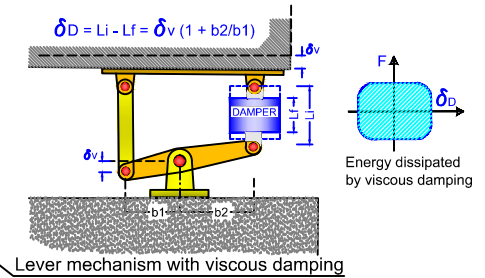
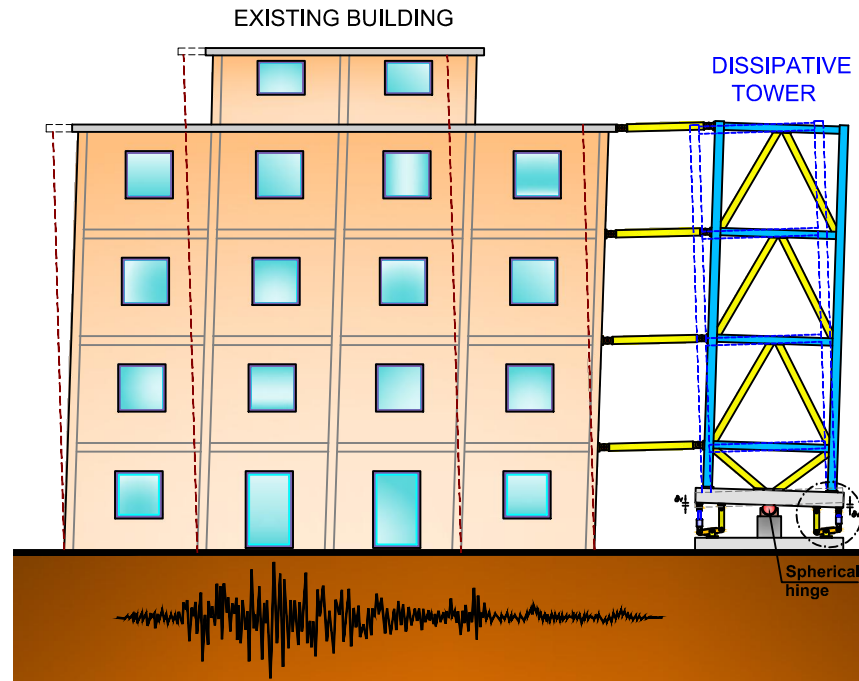
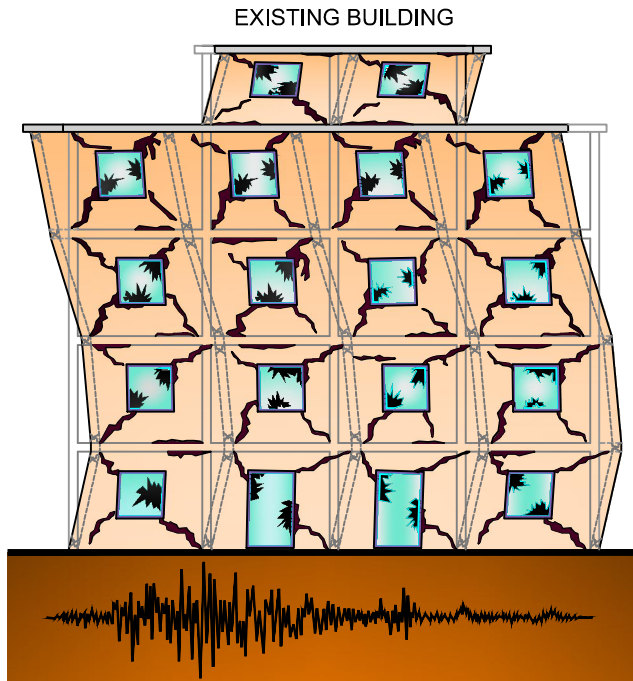


# DISSIPATIVE TOWERS for seismic protection of buildings

This innovative system for seismic retrofitting of existing buildings, particularly effective for school and hospital complex, requires the construction of external towers, equipped with dissipative devices and dedicated to seismic protection, without interfering with the internal spaces and without interrupting the functionality.



At the base, the towers are connected to a central spherical hinge support and to perimeter dampers, inserted into articulated quadrangles which amplify the device vertical displacements and enhance the system effectiveness. The dampers are radially arranged so as to be active in all the directions. The tower refocusing after a seismic event is guaranteed by the elastic energy of the existing building.



- Highest efficiency of viscous dampers.
- Strong reduction of seismic accelerations and displacements.

